

# I

**A C T !<sup>™</sup> D A T A B A S E**  
**F I L E F O R M A T S**

# Technical Reference Guide

Windows 98

Windows 95

Windows NT

## **ACT! for Windows Software Development Kit (SDK) Technical Reference Guide ACT! Database File Formats section**

The software described in this book is furnished under a license agreement and may be used only in accordance with the terms of the agreement.

### **Copyright Notice**

Copyright © 1993-1999 Symantec Corporation.

All Rights Reserved.

Released: 8/99 for ACT! 3.0, ACT! 4.0, and ACT! 2000

ALL EXAMPLES WITH NAMES, COMPANY NAMES, OR COMPANIES THAT APPEAR IN THIS MANUAL ARE IMAGINARY AND DO NOT REFER TO, OR PORTRAY, IN NAME OR SUBSTANCE, ANY ACTUAL NAMES, COMPANIES, ENTITIES, OR INSTITUTIONS. ANY RESEMBLANCE TO ANY REAL PERSON, COMPANY, ENTITY, OR INSTITUTION IS PURELY COINCIDENTAL.

Every effort has been made to ensure the accuracy of this manual. However, Symantec makes no warranties with respect to this documentation and disclaims any implied warranties of merchantability and fitness for a particular purpose. Symantec shall not be liable for any errors or for incidental or consequential damages in connection with the furnishing, performance, or use of this manual or the examples herein. The information in this document is subject to change without notice.

### **Trademarks**

Symantec, the Symantec logo, ACT!, and WinFax are U.S. registered trademarks of Symantec Corporation. Microsoft, MS, Windows, Windows CE, Windows NT, Word, Exchange, Outlook, Schedule+, ActiveX, FoxPro, Visual Basic, Visual C++, and the Office logo are either registered trademarks or trademarks of Microsoft Corporation in the U.S. and/or other countries. Dale Carnegie Training is a registered trademark of Dale Carnegie and Associates. ECCO is a trademark of NetManage Inc. ExpensAble and On The Go Software are registered trademarks of On The Go Software, Inc. GoldMine is a trademark of Goldmine Software Corp. Janna Contact is the exclusive property of Janna Systems Inc. Maximizer is a registered trademark of Modatech Systems Inc. Lotus Organizer is a trademark of Lotus Development Corporation. Quicken is a registered trademark of Intuit, Inc. Sidekick is a trademark of Starfish Software. Sharkware is a trademark of CogniTech Corporation. Tracker is a trademark of Softcode Pty Ltd. Yahoo! is a registered trademark of Yahoo! Inc. WordPerfect is a registered trademark of Novell, Inc. CompuServe is a registered trademark of CompuServe, Inc., and its affiliates. cc:Mail and cc:Mail Mobile are trademarks of cc:Mail, Inc., a wholly owned subsidiary of Lotus Development Corporation. Day Runner is a registered trademark of Day Runner, Inc. Day-Timer is a registered trademark of Day-Timers, Inc. Netscape is a trademark of Netscape Communications Corporation. Portions of ACT! are Copyright 1995 by Streetwise Software. All rights reserved.

Other product names mentioned in this manual may be trademarks or registered trademarks of their respective companies and are the sole property of their respective manufacturers.

Printed in the United States of America.

10 9 8 7 6 5 4 3 2 1

# C O N T E N T S

Section I	ACT! Database File Formats	
Chapter 1	Getting Started with File Formats .....	5
	Overview of ACT! database files .....	5
	ACT! database table relationships.....	9
	What's New .....	10
	Changes for ACT! 4.0 .....	10
	Changes for ACT! 2000 .....	10
Chapter 2	Looking at ACT! <sup>TM</sup> Database Tables .....	11
	Activity table (.ADB) fields.....	12
	Contact table (.DBF) fields.....	16
	E-mail table (.EDB) fields.....	22
	Group table (.GDB) fields .....	23
	List table (.DDB) fields (requires ACT! 2000 or later) .....	27
	Notes/History table (.HDB) fields .....	28
	Relational table (.REL) fields .....	31
	Sales table (.SDB) fields (ACT! 2000 or later).....	33



## Getting Started with File Formats

This section consists of two chapters that describe the file formats of ACT!™ database tables. It provides technical information on ACT! tables and the fields within each table. This information is provided to assist in developing applications that work with ACT! databases. Using the ACT! OLE Database Object is the recommended method of reading and writing information to ACT! databases.

To use section I, you need to be familiar with, and using the following:

- ACT! 3.0 or later.
- Microsoft Windows 95, Windows 98, or Windows NT.

### Overview of ACT! database files

The following table describes ACT! database files based on their extensions.

Extension	Description
.ADB	Activity table
.ADX	Index file for the Activity (.ADB) table
.BLB	Binary Large Object Database (BLOB) file
.DBF	Contact table
.DDB	List table for the Sales (.SDB) table (in ACT! 2000 or later databases)
.DDF	Database definition file

<b>Extension</b>	<b>Description</b>
.DDX	Index file for the List (.DDB) table (in ACT! 2000 or later databases)
.EDB	E-mail table
.EDX	Index file for the E-mail (.EDB) table
.GDB	Group table
.GDX	Index file for the Group (.GDB) table
.HDB	Notes/History table
.HDX	Index file for the Notes/History (.HDB) table
.LCK	Record locking file for ACT! multi-user databases
.MDX	Index file for the Contact (.DBF) table
.REL	Relational table for ACT! tables
.REM	Reminders file (in ACT! 2000 or later databases)
.REX	Index file for the Relational (.REL) table
.SDB	Sales table (in ACT! 2000 or later databases)
.SDX	Index file for the Sales (.SDB) table (in ACT! 2000 or later databases)
.TDB	Transaction synchronization log table
.TDX	Index file for the Transaction synchronization log (.TDB) table
.TL $x$	Record locking file for ACT! multi-user databases on a network, where $x$ is the number of each subsequent file (TL1, TL2, and so on)

The following list provides brief descriptions of ACT! database tables and an overview of data relationships within ACT! tables.

Activity (.ADB)	Contains records for call, meeting, and to-do activities. Activity records are identified by a Unique ID and an activity type. Activity records are linked to contact records by Relational table records and to group records by a Unique ID.
-----------------	------------------------------------------------------------------------------------------------------------------------------------------------------------------------------------------------------------------------------------------------

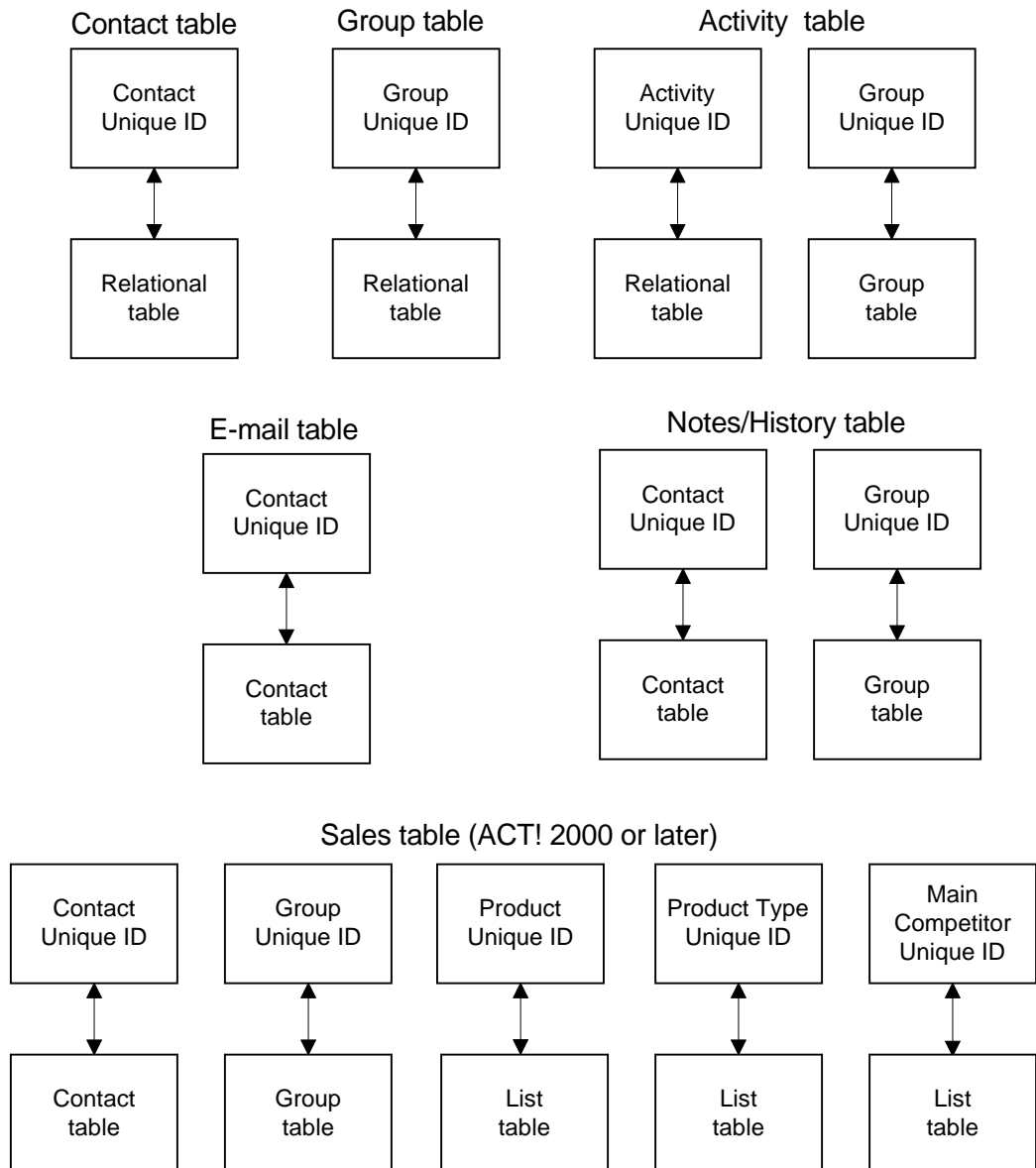
Binary Large Object Database (.BLB)	Contains variable size data including attachment file and path names, database user information, drop-down list information, e-mail addresses, notes and history regarding text, recurring activity information, and synchronization settings. ACT! database tables contain references as links to a Binary Large Object Database file.
Contact (.DBF)	Contains contact information. Contact records are identified by a Unique ID and linked with an ACT! database user by the User Name.
Database Definition File (.DDF)	Stores field definition information including mapping of ACT! field names to ACT! database schema names, index file structures, and references to drop-down list items in the Binary Large Object Database (.BLOB) file.
E-mail (.EDB)	Contains the e-mail address and e-mail system information that is displayed in the Contact window. E-mail records are identified and linked to contact records by the Contact Unique ID field. E-mail addresses are stored in the Binary Large Object Database file.
Group (.GDB)	In ACT! 3.0 or later, contains separate records each with their own histories, notes, and attachments. Group records are identified by a Unique ID and linked with an ACT! database user by the User Name. Group records are linked to contact records by records in the Relational table.
List (.DDB)	In ACT! 2000 or later, contains product, product type, and main competitor data linked to the Sales table. The Sales table stores a Unique ID for the field containing each of these three types of data. List records are identified and linked to sales records by the List table Unique ID field.
Notes/History (.HDB)	Contains notes, histories, and attachments. Note, history, and attachment records are identified by a Unique ID. Notes/History records and attachments are linked to contact and group records by Unique ID fields in Notes/History table records.
Record locking file (.LCK)	The Record locking file for ACT! multi-user databases.
Relational table (.REL)	The Relational table is used in ACT! 3.0 or later to link contact, group, and activity table records.

Reminders file (.REM)	Contains ACT! reminders data supplied by the system.
Sales (.SDB)	In ACT! 2000 or later, contains sales information. Sales records are identified by a Unique ID. Sales records are linked to contact and group records and data in the List table by Unique ID fields in Sales table records.
Transaction Synchronization Log (.TDB)	Records the fields that are changed in an ACT! database and the date and the time of the change for synchronization with another database.



## ACT! database table relationships

The following diagram shows each table in an ACT! and shows how these tables are linked, including links to the Relational table.



ACT! database table fields also link to data stored in the Binary Large Object Database (BLOB) file.

The Unique ID field contains a 12 character value that is derived from the current date and time, then translated into a unique sequence of alphanumeric and special characters that can be displayed.

## **What's New**

The following paragraphs describe changes for ACT! 4.0 and ACT! 2000.

### **Changes for ACT! 4.0**

The Ticker Symbol field in the Contact table and record type 102 for the new E-mail record type in the Notes/History table have been added for ACT! 4.0. Indexes have been added for the additional Company and Phone columns in the Task List. In ACT! 4.0, the E-mail system is a preference and is stored in the Windows registry instead of being stored in the E-mail table as in ACT! 3.0.

### **Changes for ACT! 2000**

The List table, Sales table, and the Reminders file have been added for ACT! 2000. The following fields have been added to the Activity table: Details, External Id, and Record Status. The following fields have been added to the Group table: Group Level, Industry, Number of Employees, Parent ID, Referred By, Region, Revenue, SIC Code, Ticker Symbol, and Web Site.

## Looking at ACT!™ Database Tables

This chapter provides information about the relationships between ACT! database tables available in ACT! 3.0 or later. It also provides file format information about fields within records in ACT! database tables. The ACT! database is a collection of files used to store information that is entered by the user. This collection of files consists of tables that store contact, group, activity, notes and history, e-mail, and other information. The Relational table stores links that allow this information to be accessible in associated tables within the ACT! application. ACT! 3.0 or later uses standard FoxPro formatted tables.

The tables in this chapter show database schema information for each field in every ACT! database table. This includes database schema names, field names, field formats, and field lengths. The tables also show the field ID values and the corresponding field constants to use to read and write data to ACT! database fields using the ACT! OLE Database Object and the ACT! OLE Application Object.

Added user-defined fields start numbering at Unique ID type 1000. Also, any field whose Unique ID type is between 200 and 999 is a virtual field that is read-only. Virtual fields reference a calculated value, a portion of a field in the same table, or a field in another table of file.

## Activity table (.ADB) fields

The following table shows database schema information for each field in an ACT! database Activity table.

Database schema name	Field name	Format/Length	Field ID	Field constant	Description
ALRMSTATUS	Alarm Status	Num 1	33	AF_AlarmStatus	Alarm status for the activity. Values are: 0 Alarm is set to off 1 Alarm is set to on
BANNER_CLR	Banner Color	Num 10	34	AF_BannerColor	Code for the activity color. Default values are: Black Low-priority Blue Medium-priority Red High-priority
CLEARED	Cleared Status	Num 1	41	AF_ClearedStatus	Specifies if the activity was cleared. Values are: Blank Not cleared 1 Cleared
CONT_CNT	Contact Count	Num 6	100	AF_TotalInActivity	Total number of contacts with whom the activity is scheduled. This field is supplied by the system.
CTIME	Create Timestamp	Char 6	2	AF_CreateTimestamp	Date and time the activity record was created. This field is supplied by the system and stored in a compressed format.
DETAILS	Details	Char 6	45	AF_Details	Contains a description of the details associated with the activity for ACT! 2000 or later databases only. This 6-byte field is supplied by the system and contains a reference to a field in the Binary Large Object Database file that contains a maximum of 32,768 characters.
DURATION	Duration	Num 10	30	AF_Duration	Duration of the activity in minutes.

Database schema name	Field name	Format/Length	Field ID	Field constant	Description
EML_STATUS	E-mail Status	Num 1	35	AF_EmailStatus	Specifies if an e-mail reminder will be sent for the activity. Values are: 0 No reminder will be sent 1 A reminder will be sent
END_TIME	End Time	Char 12	29	AF_EndTime	Calculated end date and time for the activity. The format is YYYYMMDDHHMM. This field is supplied by the system.
ETIME	Edit Timestamp	Char 6	3	AF_EditTimestamp	Date and time the activity record was last modified. The initial value is the date and time the activity record was created. This field is supplied by the system and stored in a compressed format.
EXCEPTDATE	Exception Date	Char 12	44	AF_ExceptionDate	Original date of an exception instance of a recurring activity. The format is YYYYMMDDHHMM.
EXCEPTIONS	Recurring Exceptions	Char 6	43	AF_Exceptions	A list of dates for exception instances of a recurring activity. This 6-byte field is supplied by the system and contains a reference to data stored in the Binary Large Object Database file.
EXTERNID	External Id	Char 48	47	AF_ExternalId	Contains the record ID of an activity record in an external database (Outlook) in ACT! 2000 or later databases only.
GROUPID	Group	Char 12	39	AF_GroupId	The Unique ID of the group record to which the activity record is associated. This field is supplied by the system.
LEAD_TIME	Lead Time	Num 10	32	AF_LeadTime	Advance notice for the activity alarm in minutes. The default lead time for the activity is used if the alarm is not set.
MTIME	Merge Timestamp	Char 6	4	AF_MergeTimestamp	Date and time the activity record was imported into ACT! or synchronized with another ACT! database. This field is supplied by the system and stored in a compressed format.

Database schema name	Field name	Format/Length	Field ID	Field constant	Description
PRIORITY	Priority	Num 1	26	AF_Priority	Priority of the activity. Values are: 0 High 1 Medium 2 Low
PUB_STATUS	Public/Private	Num 1	5	AF_PublicPrivate	Specifies if the activity is public or private. Values are: 1 Public 2 Private
RECSTATUS	Record Status	Num 2	46	AF_RecordStatus	Specifies if the record was imported from or exported to an external database (Outlook), in ACT! 2000 or later databases only.
RECURID	Recurring Identifier	Char 12	42	AF_RecurringId	For recurring activities, contains the Unique ID of the parent activity if this instance of the recurring activity has been changed. Otherwise this field is blank. This field is supplied by the system.
RECURRING	Recurring Map	Char 18	36	AF_Recurring	Recurring activity settings of: once (default), daily, weekly, monthly, or custom.
REGARDING	Regarding	Char 70	27	AF_Regarding	Description of the activity.
SCHEDL_BY	Scheduled By	Char 12	38	AF_ScheduledBy	User ID of the database user who scheduled the activity. The default is the logged-on user. This field is supplied by the system.
—	Scheduled Date	Char 8	200	AVF_ScheduledDate	Date portion of the date and time for which the activity is scheduled. The format is YYYYMMDD. This field references the Date/Time field and is read-only.
SCHEDL_FOR	Scheduled For	Char 12	37	AF_ScheduledFor	User ID of the database user for whom the activity is scheduled. The default is the logged-on user. This field is supplied by the system.

Database schema name	Field name	Format/Length	Field ID	Field constant	Description
—	Scheduled Time	Char 4	201	AVF_ScheduledTime	Time portion of the date and time for which the activity is scheduled. The format is HHMM. This field references the Date/Time field and is read-only.
SCHEDLWITH	Scheduled With	Char 12	40	AF_FirstScheduledWith	User ID of the contact displayed in the Calendar, Activities tab, and Task List for the activity. This field is supplied by the system.
START_TIME	Date/Time (“Date” and “Time” display)	Char 12	28	AF_StartTime	Start date and time of the activity. The format is YYYYMMDDHHMM. The default is the current system date and time.
TDURATION	Total Duration	Num 6	101	AF_TotalDuration	Total number of minutes from the start time of the first instance of the activity to the ending time of the last instance of the activity, minus one minute.
TM_STATUS	Timeless Status	Num 1	31	AF_TimelessStatus	Timeless status for the start time of the activity. Values are: 0 Not timeless 1 Timeless
TYPE	Type	Num 2	25	AF_Type	Activity record type. Values are: 0 Call 1 Meeting 2 To-do
UNIQUE_ID	Unique Id	Char 12	1	AF_UniqueID	Unique activity record identification number. This field is supplied by the system.

## Contact table (.DBF) fields

The following table shows database schema and Contact window information for each field in an ACT! database Contact table.

Database schema name	Field name	Format/Length	Field ID	Field constant	Description
ADDR1	Address 1 (“Address” displays)	Char 50	27	CF_Address1	First line of the contact’s primary address.
ADDR2	Address 2 (label is not displayed)	Char 30	28	CF_Address2	Second line of the contact’s primary address.
ADDR3	Address 3 (label is not displayed)	Char 30	29	CF_Address3	Third line of the contact’s primary address.
ALT1REACH	2nd Last Reach (not displayed unless added in the Layout Designer)	Char 8	92	CF_Alt1Reach	Date of the last completed call to the second contact. The format is YYYYMMDD. This field is supplied by the system.
ALT2REACH	3rd Last Reach (not displayed unless added in the Layout Designer)	Char 8	93	CF_Alt2Reach	Date of the last completed call to the third contact. The format is YYYYMMDD. This field is supplied by the system.
ALTADDR1	Home Address 1	Char 50	65	CF_AltAddress1	First line of the contact’s home address.
ALTADDR2	Home Address 2	Char 30	66	CF_AltAddress2	Second line of the contact’s home address.
ALTCITY	Home City	Char 30	67	CF_AltCity	City in the contact’s home address.
ALTCOUNTRY	Home Country	Char 25	70	CF_AltCountry	Country in the contact’s home address.
ALTEXT	Alt Phone Ext. (“Ext.” displays)	Char 8	82	CF_AltPhoneExt	Extension for the contact’s alternate phone number.
ALTPHONE	Alt Phone	Char 42	71	CF_AltPhone	Contact’s alternate phone number.
ALTSTATE	Home State	Char 20	68	CF_AltState	State in the contact’s home address.
ALTZIP	Home Zip	Char 10	69	CF_AltZip	Zip code in the contact’s home address.



Database schema name	Field name	Format/Length	Field ID	Field constant	Description
ASSISTANT	Assistant	Char 50	47	CF_Assistant	Name of the contact's assistant.
ASST_EXT	Asst. Phone Ext. ("Ext." displays)	Char 8	87	CF_AssstExt	Extension for the phone number of the contact's assistant.
ASST_PHONE	Asst. Phone	Char 42	86	CF_AssstPhone	Phone number of the contact's assistant.
ASST_TITLE	Asst. Title	Char 50	85	CF_AssstTitle	Title of the contact's assistant.
CITY	City	Char 30	30	CF_City	City in the contact's address.
COMPANY	Company	Char 50	25	CF_Company	Contact's company name.
CONT_TYPE	Contact Type	Num 1	125	CF_ContactType	Contact record type. Values are: blank, 0, or 1 for normal 2 for "My Record"
COUNTRY	Country	Char 25	33	CF_Country	Country in the contact's address.
CREATOR	Record Creator	Char 50	90	CF_Creator	The database user who created the contact record. This field is supplied by the system.
CTIME	Create Timestamp ("Create Date" displays)	Char 6	2	CF_CreateTimestamp	Date and time the contact record was created. This field is supplied by the system and stored in a compressed format.
DEPARTMENT	Department	Char 50	88	CF_Department	Contact's department.
—	Email Address	Char —	200	CVF_EmailAddress	The primary e-mail address for the contact. This field references the Logon field in the E-mail table for ACT! 4.0 or later databases only and is read-only.
—	Email Carrier	Char 128	203	CVF_EmailCarrier	The e-mail Carrier portion of the primary e-mail address for the contact. This field references the Carrier field in the E-mail table for ACT! 3.0 databases only and is read-only.

Database schema name	Field name	Format/Length	Field ID	Field constant	Description
—	Email Logon	Char —	202	CVF_EmailLogon	The e-mail Logon portion of the primary e-mail address for the contact. This field references the Logon field in the E-mail table for ACT! 3.0 databases only and is read-only.
ETIME	Edit Timestamp ("Edit Date" displays)	Char 6	3	CF_EditTimestamp	Date and time the contact record was last modified. This field is supplied by the system and stored in a compressed format.
EXT	Phone Ext. ("Ext." displays)	Char 8	80	CF_Ext	Extension for the contact's primary phone number.
FAX	Fax	Char 42	36	CF_Fax	Contact's fax number.
FAX_EXT	Fax Ext. (not displayed unless added in the Layout Designer)	Char 8	81	CF_FaxExt	Extension for the contact's fax number.
FNAME	First Name (not displayed unless added in the Layout Designer)	Char 50	78	CF_FirstName	Contact's first name. This field is parsed by the system from the contact.
HOME_PHONE	Home Phone	Char 42	37	CF_HomePhone	Contact's home phone number.
IDSTATUS	ID/Status	Char 25	34	CF_IDStatus	Category assigned to the contact.
LAST_ATMPT	Last Attempt	Char 8	43	CF_LastAttempt	Date of the last attempt to call the contact. The format is YYYYMMDD. This field is supplied by the system.
LAST_MEET	Last Meeting	Char 8	41	CF_LastMeet	Date of the last meeting with the contact. The format is YYYYMMDD. This field is supplied by the system.
LAST_REACH	Last Reach	Char 8	42	CF_LastReach	Date of the last completed call to the contact. The format is YYYYMMDD. This field is supplied by the system.

---

Database schema name	Field name	Format/Length	Field ID	Field constant	Description
LAST_RSLTS	Last Results	Char 75	48	CF_LastResults	Comments on the last results with the contact.
LNAME	Last Name (not displayed unless added in the Layout Designer)	Char 50	79	CF_LastName	Contact's last name. This field is parsed by the system from the contact name.
LTTR_DATE	Letter Date	Char 8	44	CF_LetterDate	Date of the last letter sent to the contact. The format is YYYYMMDD. This field is supplied by the system.
MOBILPHONE	Mobile Phone	Char 42	38	CF_MobilePhone	Contact's mobile phone number.
MTIME	Merge Timestamp ("Merge Date" displays)	Char 6	4	CF_MergeTimestamp	Date and time the contact record was imported into ACT! or synchronized with another ACT! database. This field is supplied by the system and stored in a compressed format.
NAME	Contact	Char 50	26	CF_Name	Contact's name.
NAME2	2nd Contact	Char 50	72	CF_Name2	Second contact's name.
NAME3	3rd Contact	Char 50	75	CF_Name3	Third contact's name.
—	Note	Char —	201	CVF_Note	This field is obsolete and is supplied for backward-compatibility with ACT! 2.0 databases.
OWNER	Owner (not displayed unless added in the Layout Designer)	Char 50	91	CF_UsersCompany	The company name of the database user who created the contact record.
PAGER	Pager	Char 42	39	CF_Pager	Contact's pager number.
PHONE	Phone	Char 42	35	CF_Phone	Contact's primary phone number.
PHONE2	2nd Phone	Char 42	74	CF_Phone2	Second contact's phone number.

Database schema name	Field name	Format/Length	Field ID	Field constant	Description
PHONE2_EXT	2nd Phone Ext. ("Ext." displays)	Char 8	83	CF_Phone2Ext	Extension for the second contact's phone number.
PHONE3	3rd Phone	Char 42	77	CF_Phone3	Third contact's phone number.
PHONE3_EXT	3rd Phone Ext. ("Ext." displays)	Char 8	84	CF_Phone3Ext	Extension for the third contact's phone number.
PUB_STATUS	Public/Private	Num 1	5	CF_PublicPrivate	Access level for the contact. Values are: 1 Public (default) 2 Private
REFER_BY	Referred By	Char 30	49	CF_ReferredBy	Description of the contact's referral source.
SALUTATION	Salutation	Char 30	40	CF_Salutation	Contact's letter salutation or greeting name.
SPOUSE	Spouse	Char 50	89	CF_Spouse	Name of the contact's spouse.
STATE	State	Char 20	31	CF_State	State in the contact's address.
TICKERSYM	Ticker Symbol	Char 12	95	CF_TickerSymbol	Company's stock ticker symbol for ACT! 4.0 or later databases only.
TITLE	Title	Char 50	46	CF_Title	Contact's title.
TITLE2	2nd Title	Char 50	73	CF_Title2	Second contact's title.
TITLE3	3rd Title	Char 50	76	CF_Title3	Third contact's title.
UNIQUE_ID	Unique Id	Char 12	1	CF_UniqueID	Unique contact record identification number. This field is supplied by the system.
URL	Web Site	Char 75	94	CF_URL	Contact's web site URL address.
USER	Record Manager	Char 12	6	CF_RecordManager	The Unique ID of the database user permitted to access and change the status of private contacts. This field is supplied by the system.

---

<b>Database schema name</b>	<b>Field name</b>	<b>Format/Length</b>	<b>Field ID</b>	<b>Field constant</b>	<b>Description</b>
USER1	User 1	Char 50	50	CF_User1	User-definable field 1.
USER2	User 2	Char 50	51	CF_User2	User-definable field 2.
USER3	User 3	Char 50	52	CF_User3	User-definable field 3.
USER4	User 4	Char 50	53	CF_User4	User-definable field 4.
USER5	User 5	Char 50	54	CF_User5	User-definable field 5.
USER6	User 6	Char 50	55	CF_User6	User-definable field 6.
USER7	User 7	Char 75	56	CF_User7	User-definable field 7.
USER8	User 8	Char 75	57	CF_User8	User-definable field 8.
USER9	User 9	Char 75	58	CF_User9	User-definable field 9.
USER10	User 10	Char 50	59	CF_User10	User-definable field 10.
USER11	User 11	Char 50	60	CF_User11	User-definable field 11.
USER12	User 12	Char 50	61	CF_User12	User-definable field 12.
USER13	User 13	Char 50	62	CF_User13	User-definable field 13.
USER14	User 14	Char 50	63	CF_User14	User-definable field 14.
USER15	User 15	Char 50	64	CF_User15	User-definable field 15.
ZIP	Zip	Char 10	32	CF_Zip	Zip code in the contact's address.

## E-mail table (.EDB) fields

The following table shows database schema information for each field in an ACT! database E-mail table. An e-mail record is created for each e-mail address for a contact.

Database schema name	Field name	Format/Length	Field ID	Field constant	Description
CONTACTID	Contact	Char 12	28	EF_ContactId	The Unique ID of the contact record with which the e-mail record is associated. This field is supplied by the system.
CTIME	Create Timestamp	Char 6	2	EF_CreateTimestamp	Date and time the e-mail record was created. This field is supplied by the system and stored in a compressed format.
ETIME	Edit Timestamp	Char 6	3	EF_EditTimestamp	Date and time the e-mail record was last modified. The initial value is the date and time the e-mail record was created. This field is supplied by the system and stored in a compressed format.
LOGON	Logon	Char 6	25	EF_Logon	The e-mail address. This 6-byte field is supplied by the system and contains a reference to the Binary Large Object Database file.
CARRIER	Carrier	Char 128	26	EF_Carrier (not used in ACT! 4.0 or later)	The e-mail system for the e-mail address in this record. This field is blank in ACT! 4.0 or later databases. In ACT! 4.0 or later, the e-mail system is a preference and is stored in the Windows registry.
MTIME	Merge Timestamp	Char 6	4	EF_MergeTimestamp	Date and time the e-mail record was imported into ACT! or synchronized with another ACT! database. This field is supplied by the system and stored in a compressed format.
PRM_STATUS	Primary Status	Num 1	27	EF_PrimaryStatus	E-mail record status. Values are: 0 Secondary e-mail address 1 Primary e-mail address
UNIQUE_ID	Unique Id	Char 12	1	EF_UniqueID	Unique e-mail record identification number. This field is supplied by the system.

## Group table (.GDB) fields

The following table shows database schema and Group window information for each field in an ACT! database Group table.

Database schema name	Field name	Format/Length	Field ID	Field constant	Description
ADDR1	Address 1	Char 50	27	GF_Address1	First line of the group's address.
ADDR2	Address 2	Char 30	28	GF_Address2	Second line of the group's address.
ADDR3	Address 3	Char 30	29	GF_Address3	Third line of the group's address.
CITY	City	Char 30	30	GF_City	City in the group's address.
CONT_CNT	Contact Count	Num 6	100	GF_TotalInGroup	Total number of contacts in the group.
COUNTRY	Country	Char 25	33	GF_Country	Country in the group's address.
CREATOR	Record Creator	Char 50	54	GF_Creator	The database user who created the group record. This field is supplied by the system .
CTIME	Create Timestamp ("Create Date" displays)	Char 6	2	GF_CreateTimestamp	Date and time the group record was created. This field is supplied by the system and stored in a compressed format.
DESCRIPTION	Description	Char 100	40	GF_Description	Description of the group.
DIVISION	Division	Char 50	26	GF_Division	Division for the group.
EMPLOY	Number of Employees	Num 10	60	GF_Employees	Number of employees in the group for ACT! 2000 or later databases only.
ETIME	Edit Timestamp ("Edit Date" displays)	Char 6	3	GF_EditTimestamp	Date and time the group record was last modified. This field is supplied by the system and stored in a compressed format.

Database schema name	Field name	Format/Length	Field ID	Field constant	Description
GRPLEVEL	Group Level	Num 1	56	GF_GroupLevel	The level of the group (a parent group or a subgroup) for ACT! 2000 or later databases only. Values are: 0 Parent group 1 Subgroup This field is.
GRP_NAME	Group Name	Char 75	25	GF_Name	Name of the group.
INDUSTRY	Industry	Char 50	58	GF_Industry	Type of industry for the group for ACT! 2000 or later databases only.
MTIME	Merge Timestamp ("Merge Date" displays)	Char 6	4	GF_MergeTimestamp	Date and time the group record was imported into ACT! or synchronized with another ACT! database. This field is supplied by the system and stored in a compressed format.
—	Note	Char —	200	GVF_Note	This field is obsolete and is supplied for backward-compatibility with ACT! 2.0 databases.
PARENTID	Parent ID	Char 12	55	GF_ParentId	The Unique ID of the parent record of a subgroup record for ACT! 2000 or later databases only. This field is supplied by the system.
—	Parent Name	Char 75	201	GVF_ParentName	The group name of the parent record of a subgroup record for ACT! 2000 or later databases only. This field is retrieved from the Parent ID field and is read-only.
PRIORITY	Priority	Char 25	35	GF_Priority	User defined description of the group's priority. Default selections are High, Medium, and Low.
PUB_STATUS	Public/Private	Num 1	5	GF_PublicPrivate	Access level for the group. Values are: 1 Public (default) 2 Private
REFER_BY	Referred By	Char 30	64	GF_ReferredBy	Description of the group's referral source for ACT! 2000 or later databases only.

---



Database schema name	Field name	Format/Length	Field ID	Field constant	Description
REGION	Region	Char 50	57	GF_Region	Description of the geographic region of the group for ACT! 2000 or later databases only.
REVENUE	Revenue	Num 19	61	GF_Revenue	Revenue for the group for ACT! 2000 or later databases only, stored with 5 digits to the right of the decimal point.
SICCODE	SIC Code	Char 20	59	GF_SicCode	SIC (Standard Industrial Classification) code for the group's industry for ACT! 2000 or later databases only.
STATE	State	Char 20	31	GF_State	State in the group's address.
TICKERSYM	Ticker Symbol	Char 12	63	GF_TickerSymbol	Group's stock ticker symbol for ACT! 2000 or later databases only.
UNIQUE_ID	Unique Id	Char 12	1	GF_UniqueID	Unique group record identification number. This field is supplied by the system.
URL	Web Site	Char 75	65	GF_URL	Group's web site URL address for ACT! 2000 or later databases only.
USER	Record Manager	Char 12	6	GF_RecordManager	The database user permitted to access and change the status of private groups.
USER1	User 1	Char 50	36	GF_User1	User-definable field 1.
USER2	User 2	Char 50	37	GF_User2	User-definable field 2.
USER3	User 3	Char 50	38	GF_User3	User-definable field 3.
USER4	User 4	Char 50	39	GF_User4	User-definable field 4.
USER5	User 5	Char 50	47	GF_User5	User-definable field 5.
USER6	User 6	Char 75	48	GF_User6	User-definable field 6.

<b>Database schema name</b>	<b>Field name</b>	<b>Format/ Length</b>	<b>Field ID</b>	<b>Field constant</b>	<b>Description</b>
ZIP	Zip	Char 10	32	GF_Zip	Zip code in the group's address.

---

## List table (.DDB) fields (requires ACT! 2000 or later)

The following table shows database schema for each field in an ACT! database List table. (Requires ACT! 2000 or later.)

Database schema name	Field name	Format/Length	Field ID	Field constant	Description
CTIME	Create Timestamp	Char 6	2	LTF_CreateTime	Date and time the list record was created. This field is supplied by the system and stored in a compressed format.
DIRNAME	Directory Name	Char 100	26	LTF_Name	Stores a drop-down list entry for a Product, Type or Main Competitor field referenced by a Unique ID in the Sales table.
DIRTYPE	Directory Type	Num 2	25	LTF_Type	Associates the Directory Name with one of three specific fields referenced by a Unique ID in the Sales table. Values are: 1 Product 2 Type 3 Main Competitor
ETIME	Edit Timestamp (System field)	Char 6	3	LTF_EditTime	Date and time the list record was last modified. The initial value is the date and time the record was created. This field is supplied by the system and stored in a compressed format.
MTIME	Merge Timestamp (System field)	Char 6	4	LTF_MergeTime	Date and time the list record was imported into ACT! or synchronized with another ACT! database. This field is supplied by the system and stored in a compressed format.
UNIQUE_ID	Unique Id (System field)	Char 12	1	LTF_UniqueID	Unique list record identification number. This field is supplied by the system.
USER	Record Manager	Char 12	6	LTF_UserId	Unique ID of the database user who created the list record. This field is supplied by the system.

## Notes/History table (.HDB) fields

The following table shows database schema information for each field in an ACT! database Notes/History table.

Database schema name	Field name	Format/Length	Field ID	Field constant	Description
ATTACHMENT	Attachment	Char 6	28	NHF_Attachment	The drive, folder, and filename of the attached file. This 6-byte field is supplied by the system and contains a reference to a field in the Binary Large Object Database file that contains a maximum of 256 characters.
CONTACTID	Contact	Char 12	29	NHF_ContactId	The Unique ID of the contact record with which the history, notes, or attachment record is associated. This field is supplied by the system.
CTIME	Create Timestamp	Char 6	2	NHF_CreateTimestamp	Date and time the history, notes, or attachment record was created. This field is supplied by the system and stored in a compressed format.
ETIME	Edit Timestamp	Char 6	3	NHF_EditTimestamp	Date and time the history, notes, or attachment record was last modified. The initial value is the date and time the record was created. This field is supplied by the system and stored in a compressed format.
GROUPID	Group	Char 12	30	NHF_GroupId	The Unique ID of any group record with which the history, notes, or attachment record is associated. This field is supplied by the system.
MTIME	Merge Timestamp	Char 6	4	NHF_MergeTimestamp	Date and time the history, notes, or attachment record was imported into ACT! or synchronized with another ACT! database. This field is supplied by the system and stored in a compressed format.
—	Recorded Date	Char 8	200	NHVF_RecordedDate	The date portion of the User Time field. The format is YYYYMMDD. This field is retrieved from the User Time field and is read-only.

Database schema name	Field name	Format/Length	Field ID	Field constant	Description
—	Recorded Time	Char 4	201	NHVF_RecordedTime	The time portion of the User Time field. The format is HHMM. This field is retrieved from the User Time field and is read-only.
REGARDING	Regarding	Char 6	26	NHF_Text	Description of the history event or the attachment, or the text of the note. This 6-byte field is supplied by the system and contains a reference to a field in the Binary Large Object (BLOB) Database file that contains a maximum of 30,000 characters. The next table shows descriptions of the regarding text by type number.
TYPE	Type	Num 3	25	NHF_Type	History event, note, or attachment type number. The next table shows values for the type numbers.
UNIQUE_ID	Unique Id	Char 12	1	NHF_UniqueID	Unique notes, history, or attachment record identification number. This field is supplied by the system.
USER	Record Manager	Char 12	6	NHF_UserId	The Unique ID of the database user permitted to access and change the status of private activities. This field is supplied by the system.
USER_TIME	User Time (Date and Time display)	Char 12	27	NHF_UserTime	Date and time the notes, history, or attachment record was created. The format is YYYYMMDDHHMM. A different date and time can be specified when an activity is cleared to history.

The following table shows type values and regarding text for the Regarding and Type fields in the Notes/History table.

Type	Regarding text	Type	Regarding text
0	Call Attempted	15	Delete Activity
1	Call Completed	16	E-mail Sent
2	Call Received	17	Call Left Message
3	Field Changed	50	Fax Sent
4	Access	51	Sent Sync

<b>Type</b>	<b>Regarding text</b>	<b>Type</b>	<b>Regarding text</b>
5	Letter Sent	52	Received Sync
6	Meeting Held	53	Replace Fields Log
7	Meeting Not Held	54	To-do Erased
8	To-do Done	55	Meeting Erased
9	To-do Not Done	56	Error
10	Timer	57	Closed/Won Sale (for ACT! 2000 or later)
11	Call Erased	58	Lost Sale (for ACT! 2000 or later)
12	Contact Deleted	100	Note
13	Update Contact	101	Attachment
14	Update Activity	102	E-mail (for ACT! 4.0 or later)

---

## Relational table (.REL) fields

The following table shows database schema for each field in an ACT! database Relational table. All fields in this table are supplied by the system.

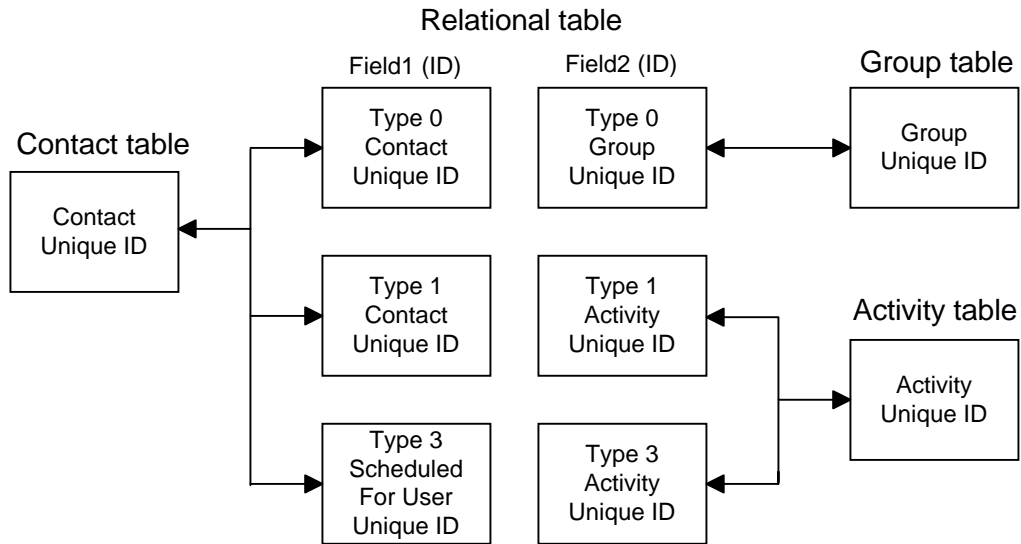
Database schema name	Field name	Format/Length	Description
CTIME	Create Time Stamp	Char 6	Date and time the relational table database record was created. This field is currently blank and reserved for future use.
ETIME	Edit Time Stamp	Char 6	Date and time the relational table database record was last modified. This field is currently blank and reserved for future use.
TYPE	Type	Char 1	Database relationship type number. Values are: 0 Links contact and group database records 1 Links contact and activity database records 3 Links contact database records with alarms
FIELD1	Field1(ID)	Char 12	For type 0 and 1 records, contains the Unique ID of the record in the contact or group database associated or linked with the group or activity record Unique ID in Field2(ID).  For type 3 records, contains the Unique ID of the database user associated with the activity record Unique ID in Field2(ID) of the activity, which has an alarm for the user for whom the activity is scheduled.
FIELD2	Field2(ID)	Char 12	Unique ID of the record in the group or activity database that is associated with the contact or group record Unique ID in Field1(ID).
TIME	Field3(Time)	Char 12	The activity alarm time. The format is YYYYMMDDHHMM.
TIME2	Field4(Time)	Char 12	The activity scheduled date. The format is YYYYMMDDHHMM. This field is blank if an alarm is not set for the activity.

## Understanding the Relational table

The following table shows relationship type values and descriptions in the Relational table.

Type	Field1(ID)	Field2(ID)	Description
0	Contact Unique ID	Group Unique ID	Links contact and group database records
1	Contact Unique ID	Activity Unique ID	Links contact and activity database records
3	Contact Unique ID of the database user for whom the activity is scheduled	Activity Unique ID	Links contact database records with alarms for whom the activity is scheduled

The following diagram shows how the Field1(ID) and Field2(ID) fields in the Relational table file are used to link records in the Contact, Group, and Activity table.





## Sales table (.SDB) fields (ACT! 2000 or later)

The following table shows database schema and Sales tab information for each field in an ACT! database Sales table. The Sales table exists only in ACT! 2000 or later.

Database schema name	Field name	Format/Length	Field ID	Field constant	Description
—	Competitors	Char 100	202	SLVF_Competitors	Name of the main competitor for the sale. This field is retrieved from the List table and is read-only.
COMPETID	Main Competitor	Char 12	37	SLF_CompetitorsId	The Unique ID of the main competitor for the sale. This field is supplied by the system and references a competitor stored in the List table.
CONTACTID	Contact	Char 12	25	SLF_ContactId	The Unique ID of the contact record with which the sales record is associated. This field is supplied by the system.
CTIME	Create Timestamp	Char 6	2	SLF_CreateTime	Date and time the record was created. This field is supplied by the system and stored in a compressed format.
ETIME	Edit Timestamp	Char 6	3	SLF_EditTime	Date and time the record was last modified. The initial value is the date and time the record was created. This field is supplied by the system and stored in a compressed format.
GROUPID	Group	Char 12	26	SLF_GroupId	The Unique ID of the group record with which the sales record is associated. This field is supplied by the system.
MTIME	Merge Timestamp	Char 6	4	SLF_MergeTime	Date and time the record was imported into ACT! or synchronized with another ACT! database. This field is supplied by the system and stored in a compressed format.
NOTES	Details	Char 6	36	SLF_Notes	Description of the sale or sales opportunity. This 6-byte field is supplied by the system and contains a reference to a field in the Binary Large Object (BLOB) Database file that contains a maximum of 32,768 characters.

Database schema name	Field name	Format/Length	Field ID	Field constant	Description
PROBABIL	Probability	Num 4	30	SLF_Probability	Probability of making the sale as a percentage from 0 to 100.
PRODID	Product Id	Char 12	28	SLF_ProductId	The Unique ID for the name of the product. This field is supplied by the system.
—	ProductName	Char 100	200	SLVF_ProductName	Name of the product for the sale. This field is retrieved from the List table and is read-only.
REASON	Reason	Char 65	38	SLF_Reason	Reason that the sale was closed/won or lost.
SALESSTAGE	Sales Stage	Char 40	39	SLF_SalesStage	Stage of the sale in the sales process (New Opportunity, Pre-Approach, and so on).
SAMOUNT	Amount	Num 19	34	SLF_Amount	The total amount for the sale, stored with 5 digits to the right of the decimal point.
SDATE	Forecasted close date	Char 8	31	SLF_SaleDate	Forecasted or actual close date for the sale. The format is YYYYMMDD.
SLSTATUS	Status	Num 1	27	SLF_Status	Status of the sale. Values are: 0 Sales opportunity 1 Closed/Won Sale 2 Lost Sale
SLTYPE	Type	Char 12	29	SLF_TypeId	The Unique ID of the type for the sale. This field is supplied by the system and references a type stored in the List table.
SPRICE	Price	Num 19	33	SLF_UnitPrice	The price per unit, stored with 5 digits to the right of the decimal point.
STARTDATE	Creation Date	Char 8	35	SLF_SaleStartDate	Date on which the sales forecast was created. The format is YYYYMMDD.
SUNITS	Units	Num 14	32	SLF_Units	Number of units expected to sell or sold
—	TypeName	Char 100	201	SLVF_TypeName	Name of the product type for the sale. This field is retrieved from the List table and is read-only.

---

<b>Database schema name</b>	<b>Field name</b>	<b>Format/Length</b>	<b>Field ID</b>	<b>Field constant</b>	<b>Description</b>
UNIQUE_ID	Unique Id	Char 12	1	SLF_UniqueID	Unique sales record identification number. This field is supplied by the system.
USER	Record Manager	Char 12	6	SLF_UserId	The Unique ID of the Record Manager for the sale. This field is supplied by the system.

---